

PV101ME

The economic Processor

This complete system is equipped with a TFT 8.4" screen and image acquisition features.

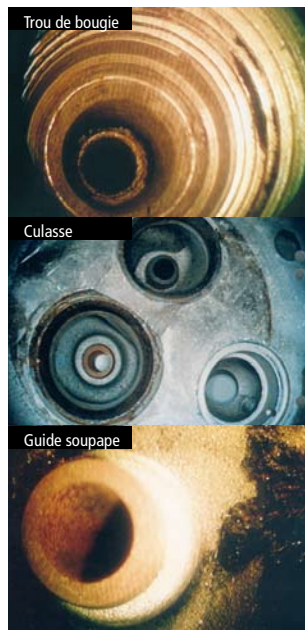
Our vast experience in innovating and developing video endoscopes has lead to the introduction of a complete new range of products, using the latest technologies.

High definition images

The video probes are equipped with the latest HAD (hole accumulation diode) CCD technology. Advanced image processing provides high quality, very bright, full screen and distortion-free images.

Insertion tube

The insertion tube is manufactured in such a way that it is extremely flexible, yet resists easily strong tensions and tractions. This offers great flexibility to access the most inaccessible and aggressive structures.



1. LCD 8.4" screen
2. Hardboard in robust ABS
3. Waterproof embedded keyboard to access the following functions:
 - image freeze
 - image acquisition
 - read and delete images
- For probes equipped with a keyboard on the hand piece, the following features are also available:
 - 4 image mosaic
 - zoom (2x) on live image
 - left/right inversion
 - color, B/W, invert
 - « low speed » (24, 12, 6 or 3 images/s),
4. Acquisition on Compact Flash memory card
5. Halogen light source 100 W, with diaphragm
6. Outputs: video composite, Y/C and USB2.
7. Automatic white balance and brightness control.
7. Power supply: 230 VAC



Ergonomical hand piece

Using the latest aeronautical materials, the hand piece combines strength, light weight, ease-of-use and reliability.



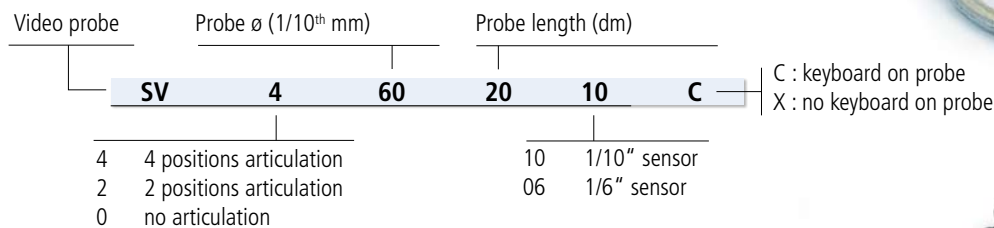
Videolab



Video endoscopes

Designation	SV 245	SV 460	SV 485	SV 065	SV 095
External diameter	Ø 4.5 mm	Ø 6 mm	Ø 8.5 mm	Ø 6.5 mm	Ø 9.5 mm
Useful length	1.5 to 5 m	2 to 4 m	2 to 6 m	2 to 20 m	2 to 20 m
Articulation	2x120°	4x120°	4x120°	-	-
Vision	0 and 90°	0°	0 and 90°	0 and 90°	0 and 90°
Field	55°	85°	55°	55°	55°
Depth of field	5 mm to ∞	8 mm to ∞	ajustable	20 mm to ∞	ajustable
CCD sensor (pixels)	320000	320000	470000	470000	470000
Format of the sensor	1/10"	1/10"	1/6"	1/6"	1/6"
Insertion sheath (braid)	Tunflex	Tunflex	Tunflex	Hytrell	Hytrell

NB: for any other diameter and length, please contact us.



Optican® rigid endoscopes

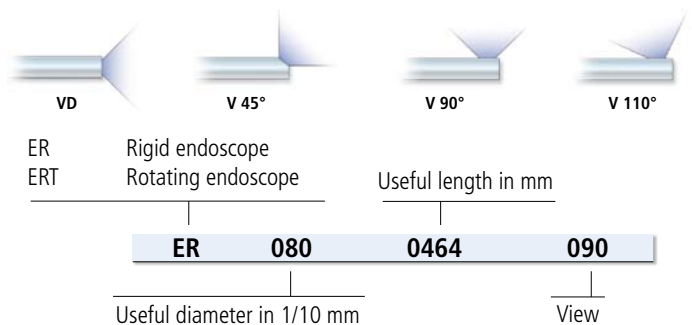
For precise inspections, the image resolution provided by rigid endoscope is unfeatable. The rigid and flexible endoscopes can be equipped with accessories such as Videolab (light source and video) and memory systems. With a direct vision endoscope, an optional mirror tube allows to inspect with side vision.

Useful Ø (mm)	Axis of vision	Useful length (mm)			
Ø 2,7	VD, V30, V70	55	105	175	360
Ø 4	VD, V30, V70	175	302		
Ø 5,5	VD ⁽¹⁾ , V45 ⁽²⁾ , V90 ⁽²⁾ , V110 ⁽²⁾	139	342	464	586 789
Ø 8	VD ⁽¹⁾ , V45 ⁽²⁾ , V90 ⁽²⁾ , V110 ⁽²⁾	221	464	710	950 1200
Ø 10	VD ⁽¹⁾ , V45 ⁽²⁾ , V90 ⁽²⁾ , V110 ⁽²⁾	221	464	710	950

⁽¹⁾ Mirror tube - ⁽²⁾ Rotation vision



Ref. : MC2 Camera



Vidéo-microscopes

«Contact» and «Non-contact» objectives

Reference	Optical magnification on 36 cm screen		Field (mm)	Depth of field (mm)
OC 25	1/2 x	25 x	10 x 13	+/- 0.5
OC 50	1 x	50 x	6.5 x 5	+/- 0.4
OC 100	2 x	100 x	3.3 x 2.5	+/- 0.2
OC 200	4 x	200 x	1.6 x 1.3	+/- 0.1
OC 400	8 x	400 x	0.8 x 0.6	+/- 0.05



Ref. : Video-microscope REF-SEM 103396

